



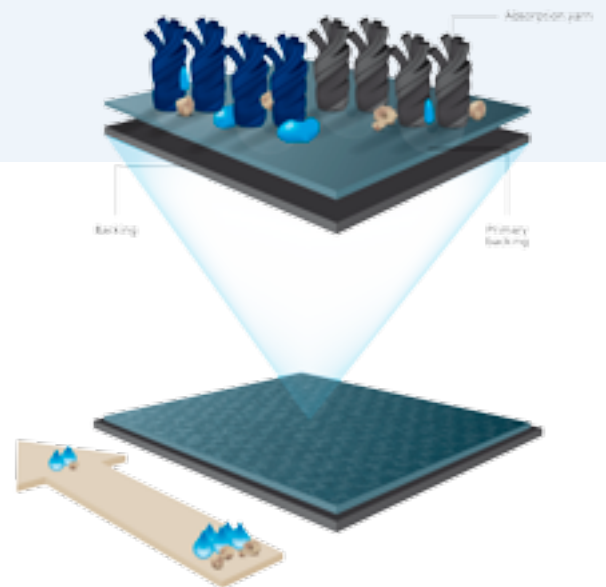
Luxor

The Luxor is a formal entrance matting that absorbs moisture and dirt. It is ideal for heavy use and works best in combination with an outdoor mat.

In commercial buildings and in medium-sized and large offices the Luxor prevents spread of moisture and dirt. It performs best in entrance areas, stairwells, pantries and lifts.

The high pile velour structure makes dirt invisible. And by using thicker and robust yarns this entrance matting can absorb dirt exceptionally well. The classic design completes this high quality mat. A phthalate free PVC backing protects the floor beneath against tracked-in moisture.

The Luxor prevents spread of moisture and dirt, resulting in lower maintenance and cleaning costs. With its uniform design and moisture and dirt absorbing qualities the Luxor fits any setting.



Specifications

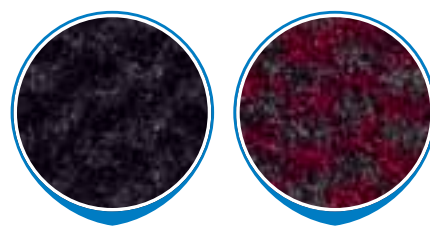
| | |
|--------------------------------------|---------------------------------------|
| Pile material | 100% Polyamide |
| Backing | PVC |
| Primary backing | nonwoven PET/PA |
| Yarn construction | Velour |
| Pattern | Block |
| Colours | 5 |
| Pile weight ISO 8543 | ± 800 g/m ² |
| Total weight ISO 8543 | ± 3.600 g/m ² |
| Pile height ISO 1766 | ± 7,0 mm |
| Total height ISO 1765 | ± 9,0 mm |
| Pile density ISO 8543 | 0,109 g/cm ³ |
| Number of stitches ISO 1763 | ± 81.100 /m ² |
| Use classification EN 1307 | 32 |
| Wearing class EN 1963 | 32 |
| Comfort EN 1307 | LC1 |
| Suitability for stairs EN 1963 | Intensive use |
| Suitability for castor chairs EN 985 | Intensive use |
| Dimensional stability ISO 2551 | < 0,4% |
| Light fastness ISO 105 B02 | > 7 |
| Water fastness ISO 105 B01 | 4 - 5 |
| Rubbing fastness ISO 105 X12 | 4 - 5 |
| Salt water ISO 105 E02 | 4 - 5 |
| Shampoo BS 1006 | 4 - 5 |
| Organic solvents ISO 105 X05 | 4 - 5 |
| Absorption capacity TNO W6034 | ± 5,2 l/m ² |
| Flammability Euroclass EN 13501 | Cfl/s1 |
| Slip Resistance EN 13893 | DS |
| Static charge ISO 6356 | < -2,0 kV |
| Sand absorption class* | NPD |
| Optical class** | NPD |
| Declaration of Performance | Available |
| Sizes rolls*** | 90, 135 & 200 cm 265 cm on request |
| Roll length | ± 20 m |
| Sizes mats*** | 60/90 cm & 90/150 cm |

* Sand absorption class 1: =< 80%, Sand absorption class 2: 80% =< class 2 < 90%. Sand absorption class 3: >=90% ** Optical class 5 is best, 1 is lowest.
*** All mentioned sizes include a 2.5 cm PVC border. The roll lengths that are given are a guideline. The actual length can turn out 15% shorter or longer. Laying and maintenance recommendations can be found on our website.

Where to use?

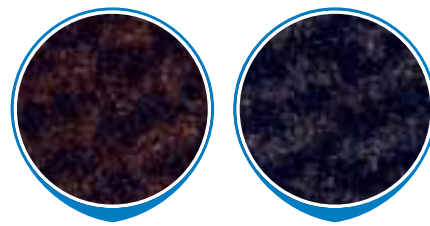
| | high traffic | medium traffic |
|-----------------------------------|--------------|----------------|
| Not combined with outdoor matting | A | B |
| Combined with outdoor matting | C | D |
| Outdoor matting | E | |

Colours



Antra 240

Red 243



Brown 245

Blue 246



Grey 248



EN 14041:2004

Contact us for more information:

Our employees are ready to answer your questions or to take your orders. Call **+31 38 385 35 00**.