



Volante Luxury, moisture- absorbent walk-off carpet

Also available with Pura Backing™

Type	Use	Traffic	Mat Matrix
Absorbent	Indoor	High	C

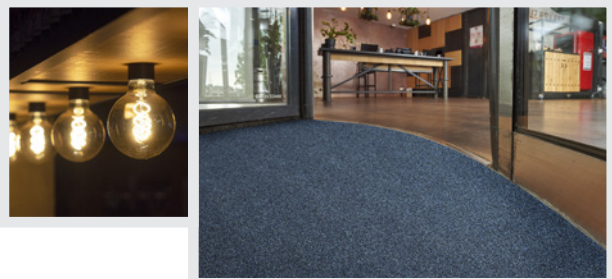
Volante is a luxurious, absorbent, walk-off entrance carpet in a mottled design, with high moisture absorption for high-traffic commercial environments.

Design

Volante has the image of cotton. The highly friséed, springy, cut pile gives this mat a lively texture with a soft-grained feel. In addition to the classic colours of blue, red and granite, there are three brown tones in the palette. These colours complement wood tones in the interior, whether red wood types (like mahogany) or greyish (like oak). Anthracite works well with natural stone floors.

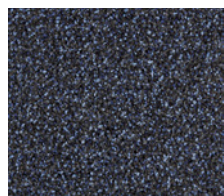
Matching all floors

Our designers develop colourways that complement every interior style. For ambiances ranging from classic to modern design. The broad Rinos range always has the right solution, to complement both interior design and floor type. **Make your own combination on our website and be inspired by our options.**



Wood warm red herringbone with Volante mahogany

Colours



Blue
706
NCS: 8010R70B



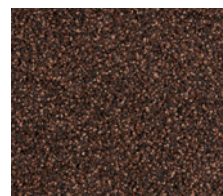
Anthracite
700
NCS: 7502B



Brown
702
NCS: 8005Y80R



Granite
705
NCS: 8500N



Mahogany
704
NCS: 8010Y90R



Red
709
NCS: 6030R10B




Terra
703
NCS: 7020Y80R

Specifications

PVC

PURA^{BACKING}

Pile material	100% Polyamide	100% Polyamide
Pile weight ISO 8543	± 950 gram/m ²	± 950 gram/m ²
Use classification EN 1307	32	32
Flammability Euroclass EN 13501	Cfl /s1	Cfl /s1
Sizes rolls ***	135/200 cm, ± 20 m ¹	135/200 cm, ± 20 m ¹
Sizes mats***	60/90, 90/150, 135/200 cm	60/90, 90/150, 135/200 cm
Backing	PVC	PU
Sand absorption class*	1	1
Optical class**	3,5	3,5
Absorption capacity TNO W6034	± 6,2 l/m ²	± 6,2 l/m ²
Total weight ISO 8543	± 3.800 gram/m ²	± 3.100 gram/m²
Pile height ISO 1766	± 6,0 mm	± 6,0 mm
Total height ISO 1765	± 8,0 mm	± 8,0 mm
Pile density ISO 8543	0,132 g/cm ²	0,132 g/cm ²
Number of stitches ISO 1763	ca. 114.100 /m ²	ca. 114.100 /m ²
Wearing class EN 1963	32	32
Comfort EN 1307	LC2	LC2
Dimensional stability ISO 2551	<0,4%	<0,4%
Light fastness ISO 105 B02	>7	>7
Water fastness ISO 105 B01	4 – 5	4 – 5
Rubbing fastness ISO 105 X12	4 – 5	4 – 5
Salt water ISO 105 E02	4 – 5	4 – 5
Shampoo BS 1006	4 – 5	4 – 5
Organic solvents ISO 105 X05	4 – 5	4 – 5
Static charge ISO 6356	<-1,4 kV	<-1,4 kV
Slip Resistance EN 13893	DS	DS
Yarn construction	Frisé	Frisé
Design	Blended	Blended
Colours	7	7
Suitability for stairs EN 1963	Intensive use	Intensive use
Suitability for castor chairs EN 985	Intensive use	Intensive use
Primary backing	nonwoven PET/PA	nonwoven PET/PA
Declaration of Performance	Available	Available

 Excluding loose-laid mats
EN 14061:2004

* Sand Absorption Class 3: ≥90%, Sand Absorption Class 2: 80% ≤ class 2 < 90%, Sand Absorption Class 1: ≤ 80% ** Optical Class: 5 is best, 1 is lowest *** All listed dimensions include a PVC edge of 2.5 cm. The roll lengths are an indication. Delivered length can be up to 15% higher or lower. Installation and maintenance advice is available on our website.

PURA^{BACKING}

Pura Backing™ is a unique Rinos product innovation, developed by our R&D department. It's the Rinos answer to increasing demand for more environmentally friendly and sustainable entrance mat solutions by avoiding the use of PVC and plasticisers. Mats with Pura Backing™ meet this requirement – with zero PVC and plasticiser content, avoiding stains on porous subfloors. Thanks to increased flexibility, it is even easier to install!

Contact us for more information

Our employees are ready to answer questions or to take your orders. **Call +31 38 385 35 00** or **mail customerservice@rinos.com**

Where to use?

	high traffic	medium traffic
Not combined with outdoor matting (scraping)	A	B
Combined with outdoor matting (absorbing)	C	D
Outdoor matting	E	

© Rinos B.V.

rinos.com/products/volante